

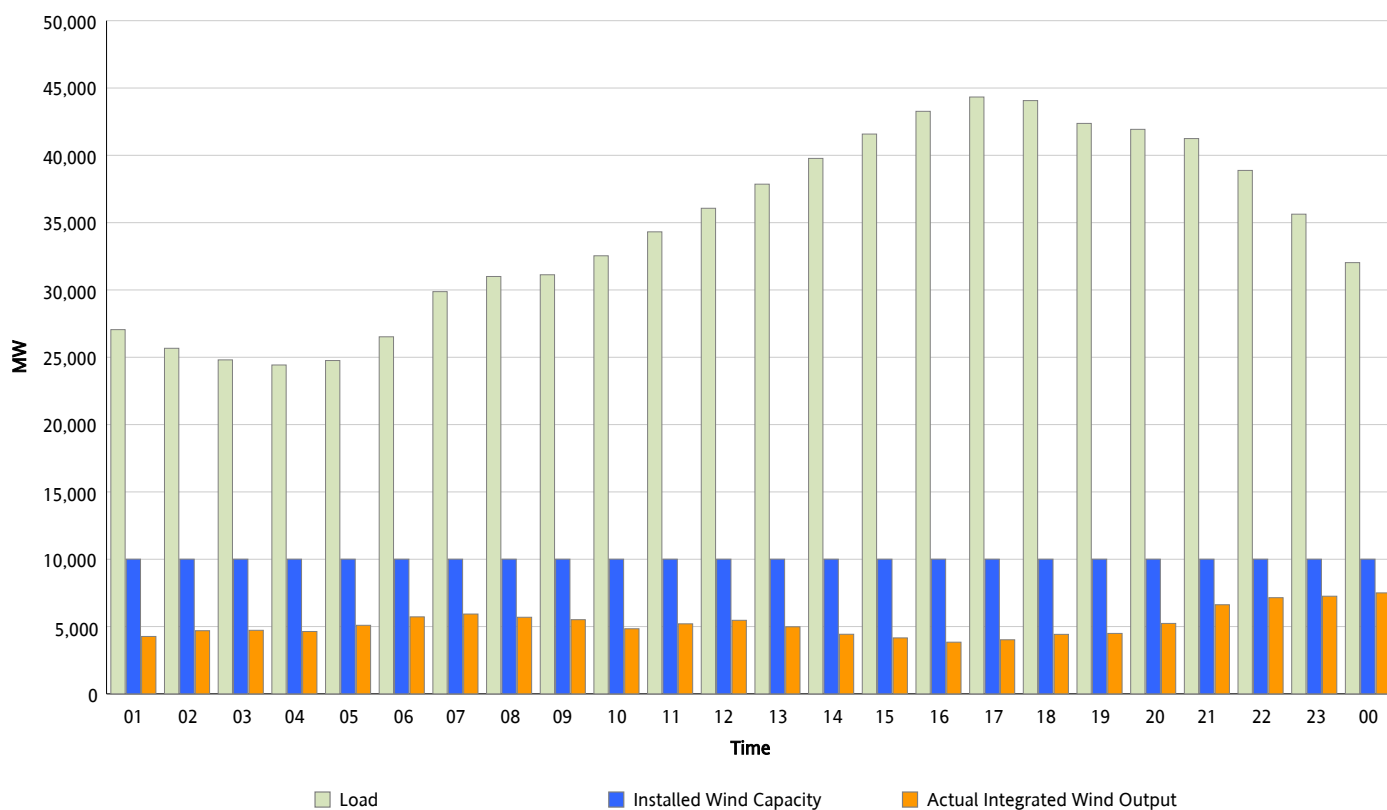


## ERCOT Grid Operations

### Wind Integration Report : 10/03/2012

Peak Load	44,334 MW
Load Peak Hour (HE)	17
Wind Over Peak	4,018 MW
Wind Record 06/19/12	8,368 MW
Max Wind Value*	7,612 MW
Wind Peak Time	23:59
Wind Integration %	24.92 %

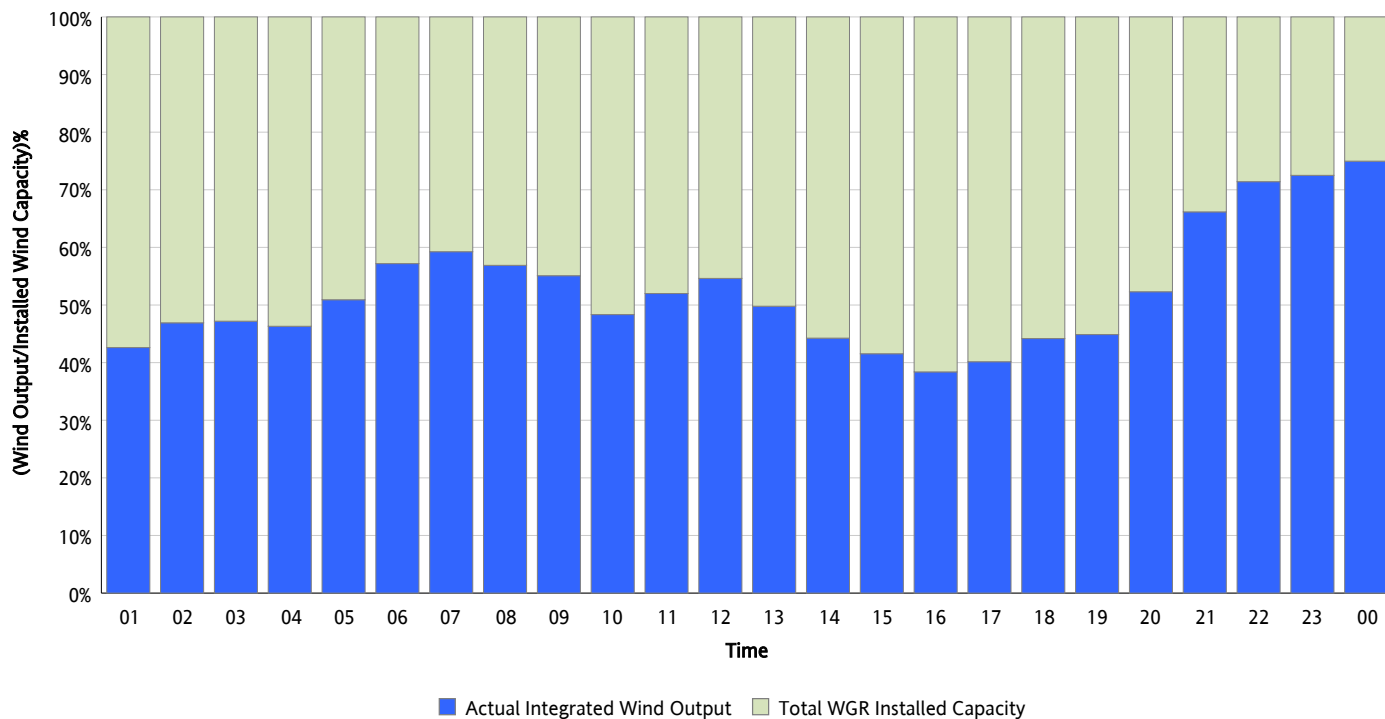
**Hourly Average Actual Load vs. Actual Wind Output**  
10/03/2012



*\* Wind Record and Wind Max represent instantaneous values and the rest of the values are integrated over the hour*

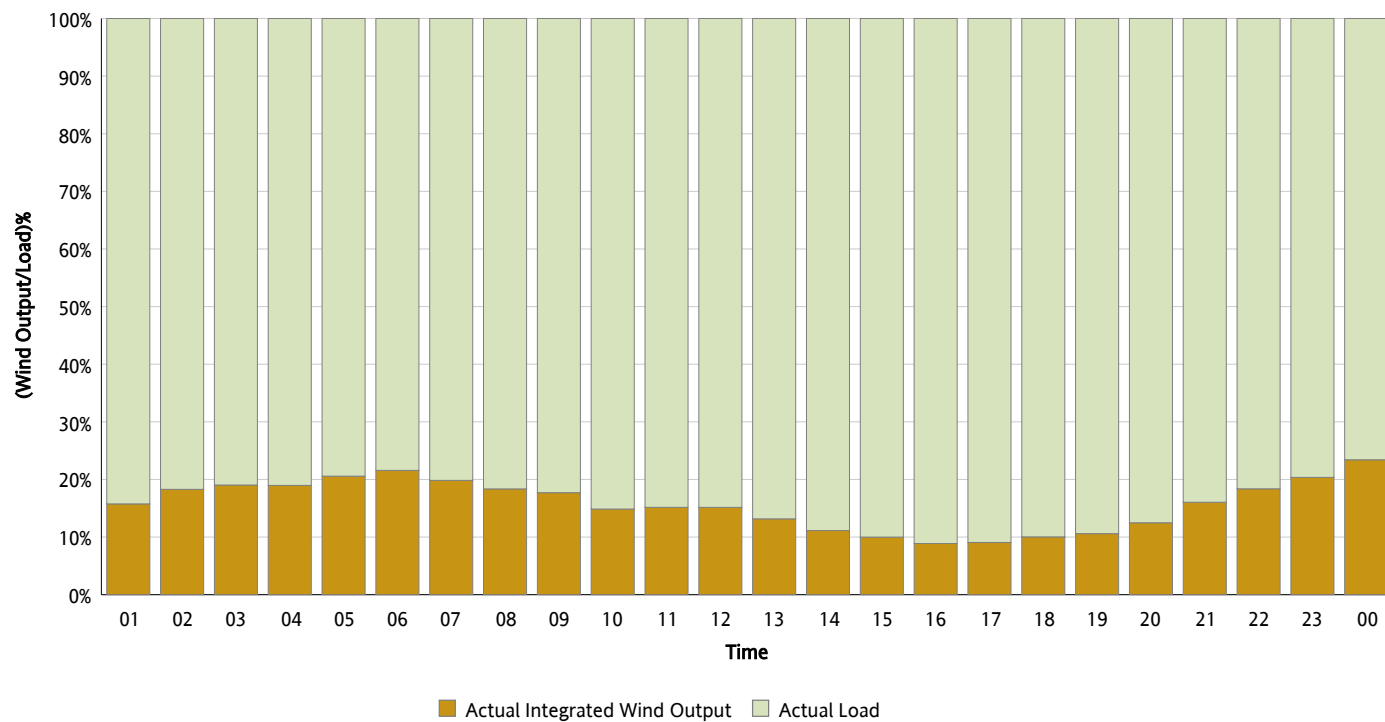
## Actual Wind Output as a Percentage of the Total Installed Wind Capacity

10/03/2012



## Actual Wind Output as a Percentage of the ERCOT Load

10/03/2012



## ERCOT Load vs. Actual Wind Output

09/26/2012 - 10/03/2012

